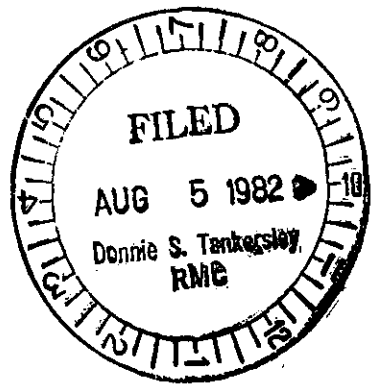
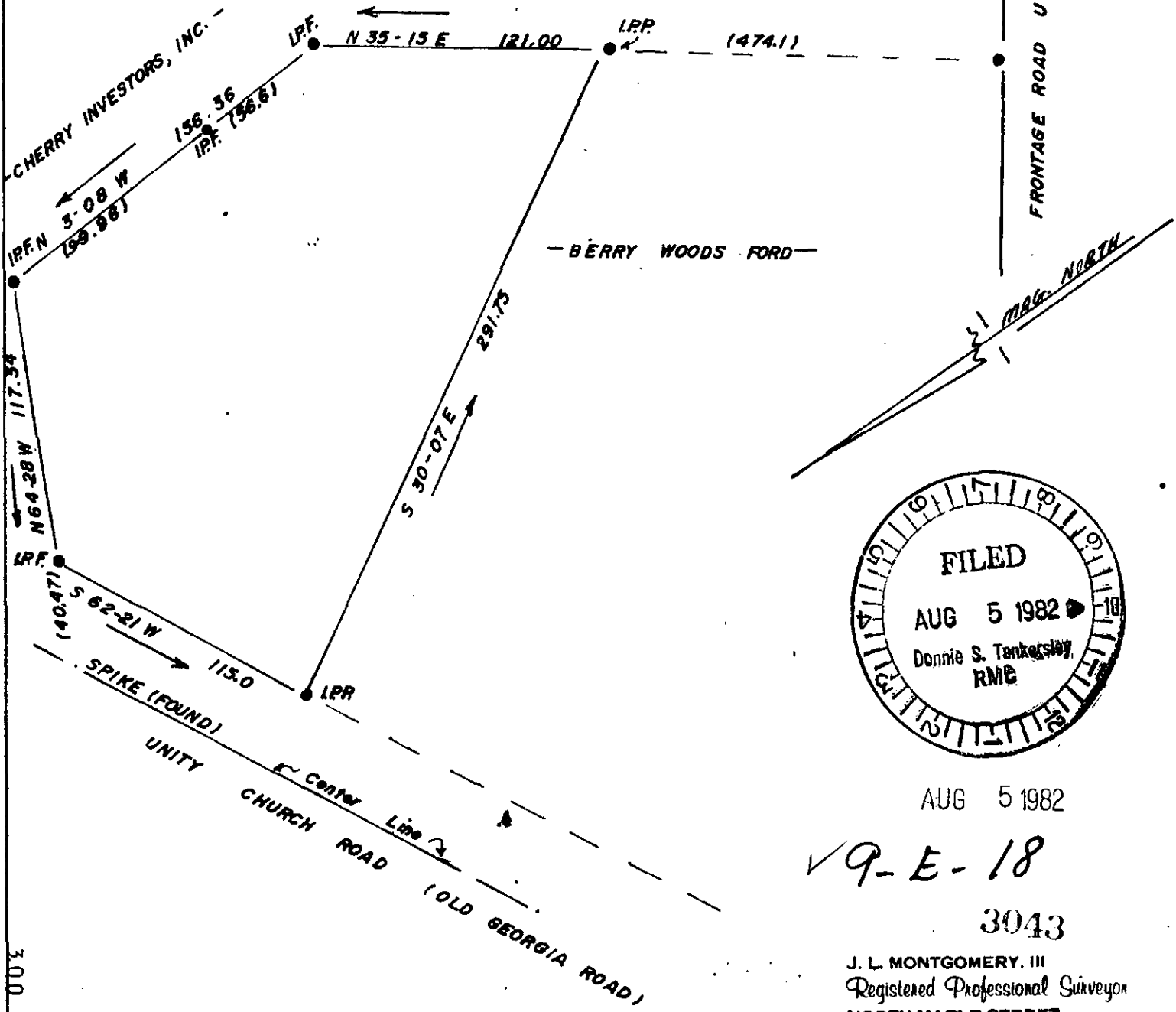


MICROFILMED

"THIS PLAT TO BE RECORDED
IN THE R.M.C. OFFICE."

— EXXON OIL COMPANY —

"THIS IS TO CERTIFY THAT THE ERROR OF CLOSURE OF THIS
SURVEY IS 1 IN 7500, AND THE ACREAGE HAS BEEN
DETERMINED BY THE D.M.D. METHOD:" J. L. Montgomery



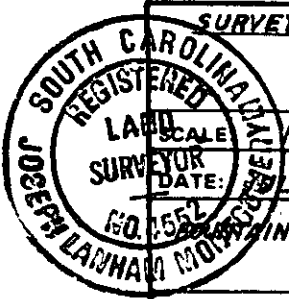
AUG 5 1982

✓ 9-E-18

3043

J. L. MONTGOMERY, III
Registered Professional Surveyor
NORTH MAPLE STREET
SIMPSONVILLE, S.C. 2968

300 8 46351801



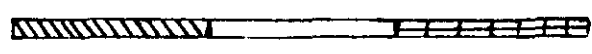
SURVEY FOR:

SPARKLE CAR WASH

LAB SCALE "60"
DATE: JULY, 1982

APPROVED BY
J. L. Montgomery, III
GREENVILLE COUNTY SOUTH CAROLINA

DRAWN BY: All
REVISED



Scale: 1" = 60'

DRAWING NUMBER

F.B. - W.S.

T.S.B. - L.S.